

**Report from** Financial Management Services, Property Management

**Date of Report:** June 10, 2019

**Date of Meeting:** June 17, 2019

**Report Number:** FMS-B022-2019

**File:** 16.7.99

**Subject:** City-Owned Land Parcels

## Recommendation

That Report FMS-B022-2019 be received for information.

## Background

At its April 16, 2018 meeting, the Budget Standing Committee (BSC) received a memorandum from the Director of Transportation and Environmental Services containing a facility asset summary with an asset description, facility category (e.g. PRCS, Fire, General, Library, Parking and Transit) and facility sub-categories (e.g. office, operations, arenas, playgrounds, pools, etc.). Staff were asked to provide further information regarding City-owned land parcels. This report provides that information.

## Report

The City owns approximately 424 parcels of land throughout the city of varying size, shape and landscape (see Appendix 1). Generally, these parcels are classified as follows:

Classification	Number of Parcels
Boulevards and Gores	26
EPA Lands-Green Space	216
Walkway, laneway, former rail	165
Held for improvement	3
Vacant land	14
<b>Total</b>	<b>424</b>

The city enjoys a variety of green spaces, which include not only parks, which are included in the City's Asset Management Plan under Facilities, but open space and trail systems, as well as many natural features such as the Niagara Escarpment, Martindale Pond, Fifteen Mile Creek, Twelve Mile Creek, the Lake Ontario Shoreline, wetlands and woodlots. The City seeks out increased access to parkland, open space and natural areas as well as the connections between them. These parcels are included within this inventory and fall within the Boulevards and Gores, EPA Lands-Green Space and Walkway, laneway and former rail categories.

Two of the parcels in the held for improvement category are within the vicinity of the Meridian Centre and include the gateways at the pedestrian bridge, which is anticipated

to be developed in Q4 2019. An additional parcel at 193 James Street has been identified and will be investigated further as a gateway to the downtown.

There are a number of parcels categorized as vacant land, and while generally these parcels have limited marketability or development potential, staff will conduct further research and due diligence in this regard over 2019 and report back to Council in Q1 2020 if there are any potential lands within this category that are surplus to City needs and can be disposed of through the City's sale of land process. The vacant land parcels are shown in Appendix 2.

## **Financial Implications**

There are no financial implications associated with this report. If there are City land parcels that are deemed surplus to City requirements and can be sold, current policy directs that all land sale proceeds be credited to the Civic Project Fund.

## **Relationship to Strategic Plan**

Economic prosperity for all is enhanced through effective asset management, which, in this case, may include receipt of revenue through the sale of land.

The retention of lands categorized as Environmental Protected Area and Green Space tie directly to the environmental sustainability pillar by allowing the City to lead in the protection of our environment for future generations and to be prepared for the impacts of climate change.

The retention of lands categorized as Walkways / Laneways tie to the social sustainability pillar by striving for the highest quality of life for all citizens, which includes connecting people, places and neighbourhoods.

## **Conclusion**

This report provides the BSC with an inventory of City-owned land parcels. Parcels that have been categorized as held for improvement or vacant land will be investigated further by staff and if deemed surplus to City requirements and able to be disposed of, staff will report back to Council in accordance with the City's sale of land process.

**Prepared and Submitted by:**  
Stephanie Tripp  
Manager, Realty and Insurance Services

**Approved by:**  
Kristine Douglas  
Director, Financial Management  
Services / City Treasurer

## **Appendices**

- Appendix 1 – City-Owned Land Parcels
- Appendix 2 - Vacant Land Parcels

## City Owned Land Parcels

### Boulevards & Gores

A boulevard or gore is described as an area of land between a property and the edge of the pavement or curb of the road.

Category	Department	Location
Boulevards & Gores	PRCS	31 Boulton Place
Boulevards & Gores	PRCS	38 Boulton Place
Boulevards & Gores	PRCS	25 Carson Court
Boulevards & Gores	PRCS	30 Carson Court
Boulevards & Gores	PRCS	166 Church Street
Boulevards & Gores	PRCS	1A Cosby Avenue
Boulevards & Gores	PRCS	418 Cushman Road
Boulevards & Gores	PRCS	38 Dunkirk Road
Boulevards & Gores	PRCS	42 Dunkirk Road
Boulevards & Gores	PRCS	46 Dunkirk Road
Boulevards & Gores	PRCS	320 Glendale Avenue
Boulevards & Gores	PRCS	177 Grantham Avenue
Boulevards & Gores	PRCS	1 Grantham Avenue
Boulevards & Gores	PRCS	42A Henley Drive
Boulevards & Gores	PRCS	221 King Street
Boulevards & Gores	PRCS	418 Merritt Street
Boulevards & Gores	PRCS	83 Queenston Street
Boulevards & Gores	PRCS	10 Rolls Avenue
Boulevards & Gores	PRCS	1 Rolls Avenue
Boulevards & Gores	PRCS	3 Rolls Avenue
Boulevards & Gores	PRCS	36 South Drive
Boulevards & Gores	PRCS	9 St Paul Street West
Boulevards & Gores	PRCS	15 Mcguire Street
Boulevards & Gores	PRCS	150 Village Road
Boulevards & Gores	PRCS	393 Welland Avenue
Boulevards & Gores	PRCS	22 Weston Road
<b># of Parcels</b>		<b>26</b>

### EPA Lands-Green Space

EPA Lands and Green space include parks, open spaces as well as many natural features including the Niagara Escarpment, Martindale Pond, Fifteen Mile Creek, Twelve Mile Creek, the Lake Ontario Shoreline, wetlands, woodlots and other valleylands and natural features.

Category	Department	Location
EPA Lands-Green Space	PRCS	13 Abbey Avenue
EPA Lands-Green Space	PRCS	7 Masefield Avenue
EPA Lands-Green Space	PRCS	18A Addison Drive
EPA Lands-Green Space	PRCS	49 Alexandra Blvd
EPA Lands-Green Space	PRCS	37 Allanburg Road
EPA Lands-Green Space	PRCS	147 Arthur Street
EPA Lands-Green Space	PRCS	11 Athlone Place
EPA Lands-Green Space	PRCS	57 Ball Avenue E
EPA Lands-Green Space	PRCS	2 Ball Avenue W
EPA Lands-Green Space	PRCS	12A Barbican Trail
EPA Lands-Green Space	PRCS	40 Battersea Avenue
EPA Lands-Green Space	PRCS	16 Bayview Drive
EPA Lands-Green Space	PRCS	101 Westchester Cres

EPA Lands-Green Space	PRCS	25A Bellevue Terrace
EPA Lands-Green Space	PRCS	37A Bellevue Terrace
EPA Lands-Green Space	PRCS	31 Bloomfield Avenue
EPA Lands-Green Space	PRCS	49A Bogart Street
EPA Lands-Green Space	PRCS	14 Broadview Avenue
EPA Lands-Green Space	PRCS	142 Broadway
EPA Lands-Green Space	PRCS	51 Brunswick Street
EPA Lands-Green Space	PRCS	22 Buckland Street
EPA Lands-Green Space	PRCS	225 Bunting Road
EPA Lands-Green Space	PRCS	31 Bunting Road
EPA Lands-Green Space	PRCS	53A Bunting Road
EPA Lands-Green Space	PRCS	99A Bunting Road
EPA Lands-Green Space	PRCS	274 Carlton Street
EPA Lands-Green Space	PRCS	73 Chestnut Street West
EPA Lands-Green Space	PRCS	28 Colton Avenue
EPA Lands-Green Space	PRCS	27 Considine Avenue
EPA Lands-Green Space	TES	33 Croydon Drive
EPA Lands-Green Space	PRCS	34 Croydon Drive
EPA Lands-Green Space	PRCS	72 Croydon Drive
EPA Lands-Green Space	PRCS	132 Cushman Road
EPA Lands-Green Space	PRCS	133 Cushman Road
EPA Lands-Green Space	PRCS	49 Port Master Drive
EPA Lands-Green Space	PRCS	59 Port Master Drive
EPA Lands-Green Space	PRCS	70 Duncan Drive
EPA Lands-Green Space	PRCS	83 Dunvegan Road
EPA Lands-Green Space	PRCS	92 Dunvegan Road
EPA Lands-Green Space	PRCS	479 Eastchester Avenue East
EPA Lands-Green Space	PRCS	41 Erion Road
EPA Lands-Green Space	PRCS	117 Erion Road
EPA Lands-Green Space	PRCS	2038 First Street
EPA Lands-Green Space	PRCS	381 Vansickle Road
EPA Lands-Green Space	PRCS	38 Flynn Court
EPA Lands-Green Space	PRCS	53 Flynn Court
EPA Lands-Green Space	PRCS	55 Flynn Court
EPA Lands-Green Space	PRCS	1229 Fourth Avenue
EPA Lands-Green Space	PRCS	45A Francis Creek Blvd
EPA Lands-Green Space	PRCS	37 Fred Fisher Cres
EPA Lands-Green Space	PRCS	29 Gale Cres
EPA Lands-Green Space	PRCS	2 Main Street
EPA Lands-Green Space	PRCS	715 Geneva Street
EPA Lands-Green Space	PRCS	549 Geneva Street
EPA Lands-Green Space	PRCS	69 Glen Morris Drive
EPA Lands-Green Space	PRCS	155 Glen Morris Drive
EPA Lands-Green Space	PRCS	9 Glendale Avenue
EPA Lands-Green Space	PRCS	60 Glendale Avenue
EPA Lands-Green Space	PRCS	75 Glendale Avenue
EPA Lands-Green Space	PRCS	202 Glendale Avenue
EPA Lands-Green Space	PRCS	295 Glendale Avenue
EPA Lands-Green Space	PRCS	10 Glenridge Avenue
EPA Lands-Green Space	PRCS	10 Golden Blvd
EPA Lands-Green Space	PRCS	1A Grapeview Drive
EPA Lands-Green Space	PRCS	2B Hainer Street
EPA Lands-Green Space	PRCS	2A Hainer Street

EPA Lands-Green Space	PRCS	56 Hillcrest Avenue
EPA Lands-Green Space	PRCS	22A Hillcrest Avenue
EPA Lands-Green Space	PRCS	7 Hillview Road
EPA Lands-Green Space	PRCS	33 Hillview Road
EPA Lands-Green Space	PRCS	63 Hillview Road
EPA Lands-Green Space	PRCS	65 Hillview Road
EPA Lands-Green Space	PRCS	93 Hillview Road
EPA Lands-Green Space	PRCS	13A Hillview Road
EPA Lands-Green Space	PRCS	25A Hillview Road
EPA Lands-Green Space	PRCS	53A Hillview Road
EPA Lands-Green Space	PRCS	71A Hillview Road
EPA Lands-Green Space	PRCS	87A Hillview Road
EPA Lands-Green Space	PRCS	36 Ivy Avenue
EPA Lands-Green Space	PRCS	38 Ivy Avenue
EPA Lands-Green Space	PRCS	41 Ivy Avenue
EPA Lands-Green Space	PRCS	43 Ivy Avenue
EPA Lands-Green Space	PRCS	43A Ivy Avenue
EPA Lands-Green Space	PRCS	33 Jarrow Road
EPA Lands-Green Space	PRCS	35 Jarrow Road
EPA Lands-Green Space	PRCS	37 Jarrow Road
EPA Lands-Green Space	PRCS	39 Jarrow Road
EPA Lands-Green Space	PRCS	46 Jarrow Road
EPA Lands-Green Space	PRCS	45 Kilkenny Drive
EPA Lands-Green Space	PRCS	34 Laird Drive
EPA Lands-Green Space	PRCS	618 Lake Street
EPA Lands-Green Space	PRCS	589A Lake Street
EPA Lands-Green Space	PRCS	45 Lakeport Road
EPA Lands-Green Space	PRCS	69 Lakeport Road
EPA Lands-Green Space	PRCS	66 Lakeport Road
EPA Lands-Green Space	PRCS	68 Lakeport Road
EPA Lands-Green Space	PRCS	251 Lakeshore Road
EPA Lands-Green Space	PRCS	298 Lakeshore Road
EPA Lands-Green Space	PRCS	421A Lakeshore Road
EPA Lands-Green Space	PRCS	6 Lakeshore Road
EPA Lands-Green Space	PRCS	25 Lighthouse Road
EPA Lands-Green Space	PRCS	34 Lincoln Avenue
EPA Lands-Green Space	PRCS	5A Linhaven Court
EPA Lands-Green Space	PRCS	101 Linwell Road
EPA Lands-Green Space	PRCS	1 Lombardy Avenue
EPA Lands-Green Space	PRCS	55A Main Street
EPA Lands-Green Space	PRCS	82A Marsdale Drive
EPA Lands-Green Space	PRCS	355 Martindale Road
EPA Lands-Green Space	PRCS	370A Martindale Road
EPA Lands-Green Space	PRCS	206 Martindale Road
EPA Lands-Green Space	PRCS	6 Mcdermid Road
EPA Lands-Green Space	PRCS	2A Mcguire Street
EPA Lands-Green Space	PRCS	9 Melody Trail
EPA Lands-Green Space	PRCS	11 Melody Trail
EPA Lands-Green Space	PRCS	13 Melody Trail
EPA Lands-Green Space	PRCS	4 Melody Trail
EPA Lands-Green Space	PRCS	6 Melody Trail
EPA Lands-Green Space	PRCS	8 Melody Trail
EPA Lands-Green Space	PRCS	10 Melody Trail

EPA Lands-Green Space	PRCS	12 Melody Trail
EPA Lands-Green Space	PRCS	14 Melody Trail
EPA Lands-Green Space	PRCS	16 Melody Trail
EPA Lands-Green Space	PRCS	18 Melody Trail
EPA Lands-Green Space	PRCS	20 Melody Trail
EPA Lands-Green Space	PRCS	22 Melody Trail
EPA Lands-Green Space	PRCS	24 Melody Trail
EPA Lands-Green Space	PRCS	26 Melody Trail
EPA Lands-Green Space	PRCS	28 Melody Trail
EPA Lands-Green Space	PRCS	1A Michigan Avenue
EPA Lands-Green Space	PRCS	1 Michigan Avenue
EPA Lands-Green Space	PRCS	26A Millbank Street
EPA Lands-Green Space	PRCS	26B Millbank Street
EPA Lands-Green Space	PRCS	60 Monck Street
EPA Lands-Green Space	PRCS	92 Newport Street
EPA Lands-Green Space	PRCS	703A Niagara Street
EPA Lands-Green Space	PRCS	611 Niagara Street
EPA Lands-Green Space	PRCS	313 Oakdale Avenue
EPA Lands-Green Space	PRCS	321 Oakdale Avenue
EPA Lands-Green Space	PRCS	8 Oakridge Avenue
EPA Lands-Green Space	PRCS	9 Oakridge Avenue
EPA Lands-Green Space	PRCS	10 Oakridge Avenue
EPA Lands-Green Space	PRCS	12 Oakridge Avenue
EPA Lands-Green Space	PRCS	33 Oakwood Avenue
EPA Lands-Green Space	PRCS	90 October Drive
EPA Lands-Green Space	PRCS	4 Old Coach Road
EPA Lands-Green Space	PRCS	5 Old Coach Road
EPA Lands-Green Space	PRCS	526 Ontario Street
EPA Lands-Green Space	PRCS	533A Ontario Street
EPA Lands-Green Space	PRCS	383A Ontario Street
EPA Lands-Green Space	PRCS	387A Ontario Street
EPA Lands-Green Space	PRCS	51 Parker Street
EPA Lands-Green Space	PRCS	60 Parker Street
EPA Lands-Green Space	PRCS	67 Parker Street
EPA Lands-Green Space	PRCS	145 Parnell Road
EPA Lands-Green Space	PRCS	29A Parnell Road
EPA Lands-Green Space	PRCS	29 Parnell Road
EPA Lands-Green Space	PRCS	8 Peacock Bay
EPA Lands-Green Space	PRCS	7 Pearl Ann Drive
EPA Lands-Green Space	PRCS	40 Ravine Road
EPA Lands-Green Space	PRCS	40 Regent Drive
EPA Lands-Green Space	PRCS	41 Regent Drive
EPA Lands-Green Space	PRCS	4 Richelieu Drive
EPA Lands-Green Space	PRCS	100 Ridley Road
EPA Lands-Green Space	PRCS	45 Riverview Blvd
EPA Lands-Green Space	PRCS	48 Riverview Blvd
EPA Lands-Green Space	PRCS	78 Riverview Blvd
EPA Lands-Green Space	PRCS	82 Riverview Blvd
EPA Lands-Green Space	PRCS	1 Rolls Avenue
EPA Lands-Green Space	PRCS	38 Rosedale Avenue
EPA Lands-Green Space	PRCS	40 Rosedale Avenue
EPA Lands-Green Space	PRCS	29 Sawmill Road
EPA Lands-Green Space	PRCS	35A Sculler's Way

EPA Lands-Green Space	PRCS	21A Seapark Drive
EPA Lands-Green Space	PRCS	55 Seaway Haulage Road
EPA Lands-Green Space	PRCS	2389A Seventh Street
EPA Lands-Green Space	PRCS	35 Shelley Avenue
EPA Lands-Green Space	PRCS	16A Shore Blvd
EPA Lands-Green Space	PRCS	5 Southgate Circle
EPA Lands-Green Space	PRCS	36 Springbank Drive
EPA Lands-Green Space	PRCS	31 St Joseph Street
EPA Lands-Green Space	PRCS	5 Towering Heights Blvd
EPA Lands-Green Space	PRCS	6 Towering Heights Blvd
EPA Lands-Green Space	PRCS	33 Trelawne Drive
EPA Lands-Green Space	PRCS	38 Trelawne Drive
EPA Lands-Green Space	PRCS	1 Valley Road
EPA Lands-Green Space	PRCS	370 Vansickle Road
EPA Lands-Green Space	PRCS	390 Vansickle Road
EPA Lands-Green Space	PRCS	82A Village Road
EPA Lands-Green Space	PRCS	27A Village Green Drive
EPA Lands-Green Space	PRCS	711 Vine Street
EPA Lands-Green Space	PRCS	602A Welland Avenue
EPA Lands-Green Space	PRCS	122 Wellandvale Road
EPA Lands-Green Space	PRCS	80 Wellandvale Road
EPA Lands-Green Space	PRCS	3 Wellandvale Road
EPA Lands-Green Space	PRCS	45 Westchester Cres
EPA Lands-Green Space	PRCS	48 Westchester Cres
EPA Lands-Green Space	PRCS	166 Westchester
EPA Lands-Green Space	PRCS	79 Westchester Cres
EPA Lands-Green Space	PRCS	87 Westchester Cres
EPA Lands-Green Space	PRCS	307 Westchester Cres
EPA Lands-Green Space	PRCS	46 Westdale Drive
EPA Lands-Green Space	PRCS	48 Westdale Drive
EPA Lands-Green Space	PRCS	51 Westgate Park Drive
EPA Lands-Green Space	PRCS	53 Westgate Park Drive
EPA Lands-Green Space	PRCS	53A Westgate Park Drive
EPA Lands-Green Space	PRCS	53 Wildwood Road
EPA Lands-Green Space	PRCS	14A Wilholme Drive
EPA Lands-Green Space	PRCS	3 Willowdale Avenue
EPA Lands-Green Space	PRCS	23 Woodruff Avenue
EPA Lands-Green Space	PRCS	89 Yates Street
EPA Lands-Green Space	PRCS	20A Ziraldo Road
EPA Lands-Green Space	PRCS	47 Alexandra Blvd
EPA Lands-Green Space	PRCS	19 St. Joseph Street
EPA Lands-Green Space	PRCS	21 St. Joseph Street
EPA Lands-Green Space	PRCS	25 St. Joseph Street
EPA Lands-Green Space	PRCS	168 Lakeshore Rd
<b># of Parcels</b>		<b>216</b>

### Held for Improvement

The PRCS parcels are located at the pedestrian bridge to the Meridian Centre and are anticipated to be improved in Q4 of 2019. 193 James Street will be investigated further.

Category	Department	Location
Held for Improvement	PRCS	40 St Paul Street - Meridian Centre
Held for Improvement	PRCS	48-50 St. Paul Street - Meridian Centre
Held for Improvement	TES	193 James Street
<b># of Parcels</b>		<b>3</b>

### Vacant Land

Land that has no buildings on it and is not currently being utilized. Generally these parcels have limited marketability or development potential however will be investigated further.

Category	Department	Location	Area in Sq M	Area in Acres
Vacant Land	TES	1 Almond Street	819	0.20
Vacant Land	TES	90 Argyle Cres	206	0.05
Vacant Land	TES	21 Birch Street	1357	0.34
Vacant Land	PRCS	3 Derby Lane	186	0.05
Vacant Land	PRCS	32 Elm Street	943	0.23
Vacant Land	PRCS	29 Emmett Road	1091	0.27
Vacant Land	PRCS	373 Glendale Avenue	247	0.06
Vacant Land	PRCS	60 Grantham Avenue	297	0.07
Vacant Land	PRCS	2 Hayes Street	441	0.11
Vacant Land	PRCS	83 Highland Avenue	557	0.14
Vacant Land	PRCS	3 Mohawk Drive	137	0.03
Vacant Land	PRCS	81A October Drive	405	0.10
Vacant Land	PRCS	81B October Drive	660	0.16
Vacant Land	PRCS	70 Sawmill Road	738	0.18
<b># of Parcels</b>		<b>14</b>		

### Walkways, Laneways, Former Rail

Connections between and access to parkland, open space, environmentally protected and natural areas.

Category	Department	Location
Walkways, Laneways, Former Rail	TES	35A Acadia Cres
Walkways, Laneways, Former Rail	TES	2 Adelene Cres
Walkways, Laneways, Former Rail	TES	43A Albany Drive
Walkways, Laneways, Former Rail	TES	67A Alexandra Blvd
Walkways, Laneways, Former Rail	TES	1A Allan Drive
Walkways, Laneways, Former Rail	TES	26A Allanburg Road
Walkways, Laneways, Former Rail	TES	23A Appleford Road
Walkways, Laneways, Former Rail	TES	50/ Argyle Cres
Walkways, Laneways, Former Rail	TES	64A Arthur Street
Walkways, Laneways, Former Rail	TES	12B Barbican Trail
Walkways, Laneways, Former Rail	TES	28A Barbican Trail
Walkways, Laneways, Former Rail	TES	61 Beachview Drive
Walkways, Laneways, Former Rail	TES	27A Beachview Drive
Walkways, Laneways, Former Rail	TES	24 Beamer Avenue
Walkways, Laneways, Former Rail	TES	23A Beau Valley Drive
Walkways, Laneways, Former Rail	TES	20A Beau Valley Drive
Walkways, Laneways, Former Rail	TES	64 Berryman Avenue



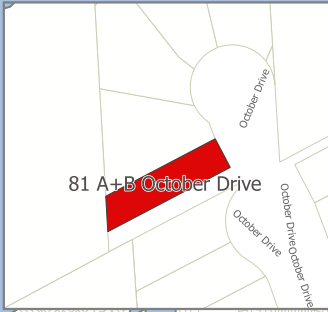
Walkways, Laneways, Former Rail	TES	31A Black Knight Road
Walkways, Laneways, Former Rail	TES	42 Breckenridge Blvd
Walkways, Laneways, Former Rail	TES	21 Brigantine Court
Walkways, Laneways, Former Rail	TES	16A Brisbane Glen
Walkways, Laneways, Former Rail	TES	10 Brown Drive
Walkways, Laneways, Former Rail	TES	94A Bula Drive
Walkways, Laneways, Former Rail	TES	211 Bunting Road
Walkways, Laneways, Former Rail	TES	523 Carlton Street
Walkways, Laneways, Former Rail	TES	206 Carlton Street
Walkways, Laneways, Former Rail	TES	205-1/2 Carlton Street
Walkways, Laneways, Former Rail	TES	532 Carlton Street
Walkways, Laneways, Former Rail	TES	56A Carriage Road
Walkways, Laneways, Former Rail	TES	55A Fir Avenue
Walkways, Laneways, Former Rail	TES	72A Carriage Road
Walkways, Laneways, Former Rail	TES	65 Seymour Avenue
Walkways, Laneways, Former Rail	TES	28A Centennial Drive
Walkways, Laneways, Former Rail	TES	31A Chancery Circle
Walkways, Laneways, Former Rail	TES	173A Parnell Road
Walkways, Laneways, Former Rail	TES	45A Chancery Circle
Walkways, Laneways, Former Rail	TES	44A Cherie Road
Walkways, Laneways, Former Rail	TES	68A Cherie Road
Walkways, Laneways, Former Rail	TES	31A Deborah Court
Walkways, Laneways, Former Rail	TES	58A Oxford Street
Walkways, Laneways, Former Rail	TES	22 Crown Street
Walkways, Laneways, Former Rail	TES	43A Port Master Drive
Walkways, Laneways, Former Rail	TES	19A Dawn Road
Walkways, Laneways, Former Rail	TES	8 Dundalk Court
Walkways, Laneways, Former Rail	TES	59A Dunvegan Road
Walkways, Laneways, Former Rail	TES	107 Eastchester Avenue
Walkways, Laneways, Former Rail	TES	127 Eastchester Avenue
Walkways, Laneways, Former Rail	TES	125A Eastchester Avenue
Walkways, Laneways, Former Rail	TES	15 Eastfield Court
Walkways, Laneways, Former Rail	TES	19 Franklin Blvd
Walkways, Laneways, Former Rail	TES	11A Fredonia Cres
Walkways, Laneways, Former Rail	TES	121A Geneva Street
Walkways, Laneways, Former Rail	TES	270 Glenridge Avenue
Walkways, Laneways, Former Rail	TES	321A Grantham Avenue
Walkways, Laneways, Former Rail	TES	52 Grantham Avenue
Walkways, Laneways, Former Rail	TES	53 Grantham Avenue
Walkways, Laneways, Former Rail	TES	47 Haynes Avenue
Walkways, Laneways, Former Rail	TES	75A Hazel Street
Walkways, Laneways, Former Rail	TES	39A Heritage Court
Walkways, Laneways, Former Rail	TES	14A Jeanette Drive
Walkways, Laneways, Former Rail	TES	34A Joanna Drive
Walkways, Laneways, Former Rail	TES	22A Juliana Cres
Walkways, Laneways, Former Rail	TES	11A Killarney Circle
Walkways, Laneways, Former Rail	TES	628 Lake Street
Walkways, Laneways, Former Rail	TES	10A Lakeport Road
Walkways, Laneways, Former Rail	TES	319 Lakeshore Road
Walkways, Laneways, Former Rail	TES	37A Lakeside Drive
Walkways, Laneways, Former Rail	TES	27A Larchwood Drive
Walkways, Laneways, Former Rail	TES	51A Leaside Drive
Walkways, Laneways, Former Rail	TES	6A Lincoln Avenue

Walkways, Laneways, Former Rail	TES	7A Linhaven Court
Walkways, Laneways, Former Rail	TES	466 Linwell Road
Walkways, Laneways, Former Rail	TES	23A Maria Street
Walkways, Laneways, Former Rail	TES	60A Mccaffery Cres
Walkways, Laneways, Former Rail	TES	4C Meredith Drive
Walkways, Laneways, Former Rail	TES	50 Michelle Drive
Walkways, Laneways, Former Rail	TES	78B Newport Street
Walkways, Laneways, Former Rail	TES	7A Noelle Drive
Walkways, Laneways, Former Rail	TES	27A Northglen Avenue
Walkways, Laneways, Former Rail	TES	2B Northglen Avenue
Walkways, Laneways, Former Rail	TES	84 October Drive
Walkways, Laneways, Former Rail	TES	376 Ontario Street
Walkways, Laneways, Former Rail	TES	91A Oxford Street
Walkways, Laneways, Former Rail	TES	9 Pacifico Place
Walkways, Laneways, Former Rail	TES	238 Parnell Road
Walkways, Laneways, Former Rail	TES	7 Peacock Bay
Walkways, Laneways, Former Rail	TES	437A Pelham Road
Walkways, Laneways, Former Rail	TES	13 Perma Court
Walkways, Laneways, Former Rail	TES	77A Prince Charles Drive
Walkways, Laneways, Former Rail	TES	86A Prince Charles Drive
Walkways, Laneways, Former Rail	TES	36A Prince Paul Cres
Walkways, Laneways, Former Rail	TES	25A Prince Philip Drive
Walkways, Laneways, Former Rail	TES	584 Read Road
Walkways, Laneways, Former Rail	TES	23 Regent Drive
Walkways, Laneways, Former Rail	TES	62A Roehampton Avenue
Walkways, Laneways, Former Rail	TES	12A Romko Court
Walkways, Laneways, Former Rail	TES	2A Rose Street
Walkways, Laneways, Former Rail	TES	87A Royal Manor Drive
Walkways, Laneways, Former Rail	TES	30 Sikorski Avenue
Walkways, Laneways, Former Rail	TES	6 Smith Street
Walkways, Laneways, Former Rail	TES	251A St Augustine Drive
Walkways, Laneways, Former Rail	TES	132 St Paul Street
Walkways, Laneways, Former Rail	TES	62A Strathcona Drive
Walkways, Laneways, Former Rail	TES	28A Tecumseh Street
Walkways, Laneways, Former Rail	TES	48A The Meadows Drive
Walkways, Laneways, Former Rail	TES	42 Turner Cres
Walkways, Laneways, Former Rail	TES	13 Wembly Drive
Walkways, Laneways, Former Rail	TES	12A Wembly Drive
Walkways, Laneways, Former Rail	TES	20A Willcher Drive
Walkways, Laneways, Former Rail	TES	72A Woodrow Street
Walkways, Laneways, Former Rail	TES	4 Wright Street
Walkways, Laneways, Former Rail	TES	45A Ziraldo Road
Walkways, Laneways, Former Rail	TES	28 Amberwood Court
Walkways, Laneways, Former Rail	TES	49A Bendingroad Cres
Walkways, Laneways, Former Rail	TES	26A Bessborough Drive
Walkways, Laneways, Former Rail	TES	23A Brimley Cres
Walkways, Laneways, Former Rail	TES	46B Butler Cres
Walkways, Laneways, Former Rail	TES	29A Canterbury Drive
Walkways, Laneways, Former Rail	TES	20A Carousel Circle
Walkways, Laneways, Former Rail	TES	21 Cullen Drive
Walkways, Laneways, Former Rail	TES	110 Dorchester Blvd
Walkways, Laneways, Former Rail	TES	7A Dundas Cres
Walkways, Laneways, Former Rail	TES	28A Eagleson Drive

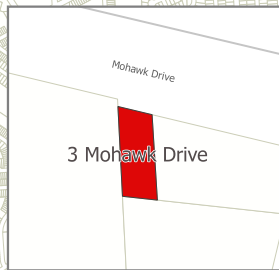
Walkways, Laneways, Former Rail	TES	34 Eleanordale Circle
Walkways, Laneways, Former Rail	TES	5A Ellen Circle
Walkways, Laneways, Former Rail	TES	28A Garfield Lane
Walkways, Laneways, Former Rail	TES	33A Jessica Drive
Walkways, Laneways, Former Rail	TES	52A Lafayette Drive
Walkways, Laneways, Former Rail	TES	15A Lantana Circle
Walkways, Laneways, Former Rail	TES	28 Lincoln Avenue
Walkways, Laneways, Former Rail	TES	31A Meadowbrook Cres
Walkways, Laneways, Former Rail	TES	59A Nello Street
Walkways, Laneways, Former Rail	TES	18A O Mara Drive
Walkways, Laneways, Former Rail	TES	31A Old Mill Road
Walkways, Laneways, Former Rail	TES	17/ Parklane Cres
Walkways, Laneways, Former Rail	TES	18A Parklane Cres
Walkways, Laneways, Former Rail	TES	16/ Pelham Road
Walkways, Laneways, Former Rail	TES	22/ Pelham Road
Walkways, Laneways, Former Rail	TES	21A Port Master Drive
Walkways, Laneways, Former Rail	TES	47A Port Master Drive
Walkways, Laneways, Former Rail	TES	522 Queenston Street
Walkways, Laneways, Former Rail	TES	35A Richelieu Drive
Walkways, Laneways, Former Rail	TES	165/ Riverview Blvd
Walkways, Laneways, Former Rail	TES	33B Royal York Road
Walkways, Laneways, Former Rail	TES	59A Royal York Road
Walkways, Laneways, Former Rail	TES	5 Runcorn Street
Walkways, Laneways, Former Rail	TES	66 Runcorn Street
Walkways, Laneways, Former Rail	TES	40A Sherman Drive
Walkways, Laneways, Former Rail	TES	58A Sherman Drive
Walkways, Laneways, Former Rail	TES	75A Spring Garden Blvd
Walkways, Laneways, Former Rail	TES	8A St Paul Cres
Walkways, Laneways, Former Rail	TES	20 Stockwell Road
Walkways, Laneways, Former Rail	TES	30A The Cedars
Walkways, Laneways, Former Rail	TES	16A Valencia Drive
Walkways, Laneways, Former Rail	TES	69 Welstead Drive
Walkways, Laneways, Former Rail	TES	50 Westchester Cres
Walkways, Laneways, Former Rail	TES	17 Willowdale Avenue
Walkways, Laneways, Former Rail	TES	2A Walnut Street
Walkways, Laneways, Former Rail	TES	Glendale Avenue
Walkways, Laneways, Former Rail	TES	9 Aberdeen Circle
Walkways, Laneways, Former Rail	TES	47 Alexandra Blvd
Walkways, Laneways, Former Rail	TES	39A Beachview Drive
Walkways, Laneways, Former Rail	TES	51 Westchester Cres
Walkways, Laneways, Former Rail	TES	14 Carn Castle Gate
Walkways, Laneways, Former Rail	PRCS	160 St. Paul
<b># of Parcels</b>		<b>165</b>

# Vacant Land Parcels

2



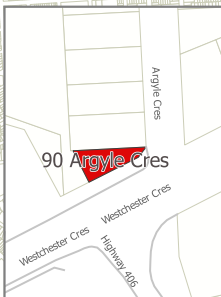
81 A+B October Drive



3 Mohawk Drive



60 Grantham Avenue S



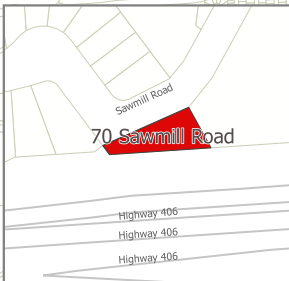
90 Argyle Cres



3 Derby Lane



29 Emmett Road



70 Sawmill Road



83 Highland Avenue



32 Elm Street

21 Birch Street



1 Almond Street



373 Glendale Avenue



2 Hayes Street